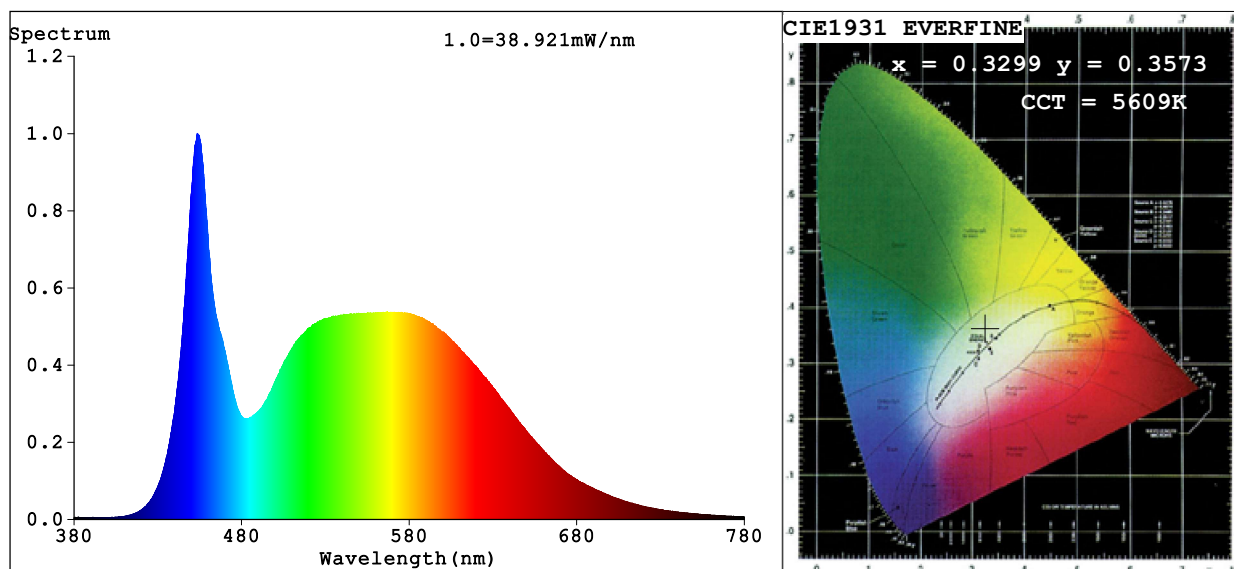


Spectrum Test Report



Color Parameters:

Chromaticity Coordinate: $x=0.3299$ $y=0.3573$ $u'=0.1991$ $v'=0.4852$

CCT=5609K (Duv=0.0092) Dominant WL:Ld =546.8nm Purity=6.3%

Ratio:R=13.9% G=80.9% B=5.1%; Peak WL:Lp=453.6nm FWHM=21.3nm

Render Index:Ra=81.9 CRI=74.1 TM30:Rf=81 Rg=92

R1 =79 R2 =88 R3 =94 R4 =79 R5 =79 R6 =83 R7 =88

R8 =65 R9 =0 R10=71 R11=78 R12=55 R13=81 R14=97 R15=72

Photo Parameters:

Flux = 1368 lm Eff. : 98.09 lm/W Fe = 4.226 W Scotopic:2884.3 S/P:2.1083

Electrical parameters:

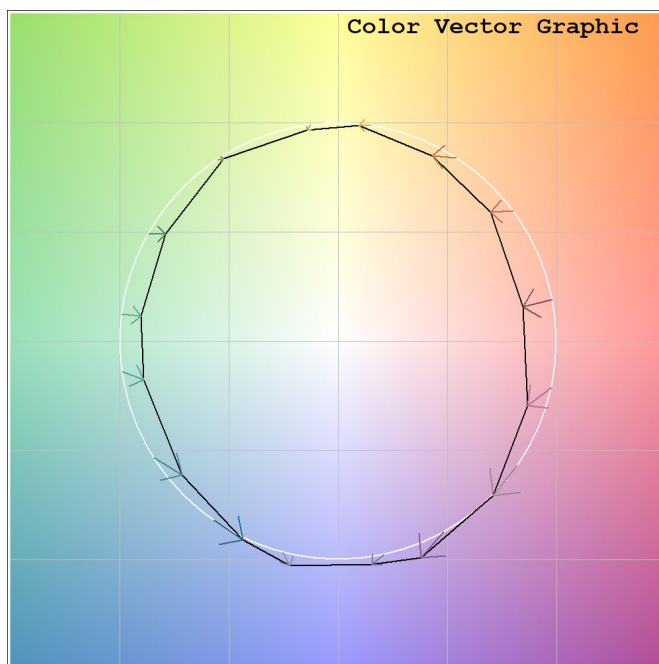
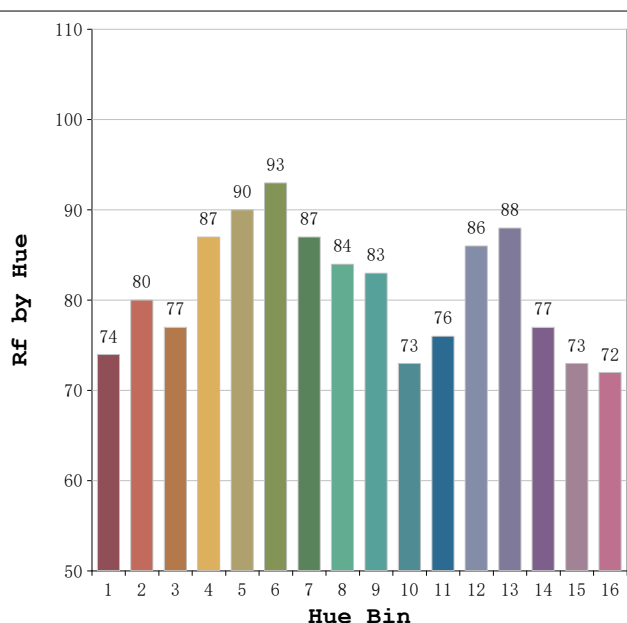
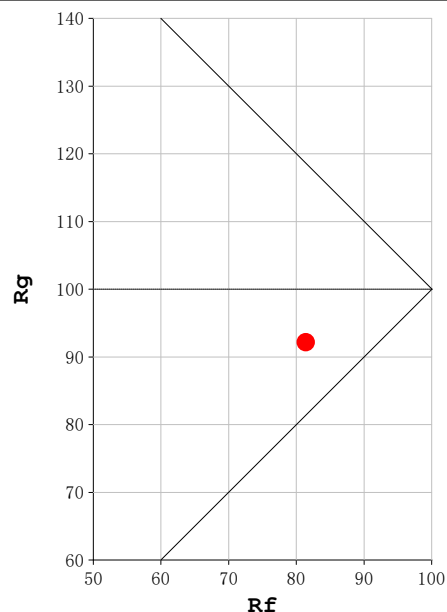
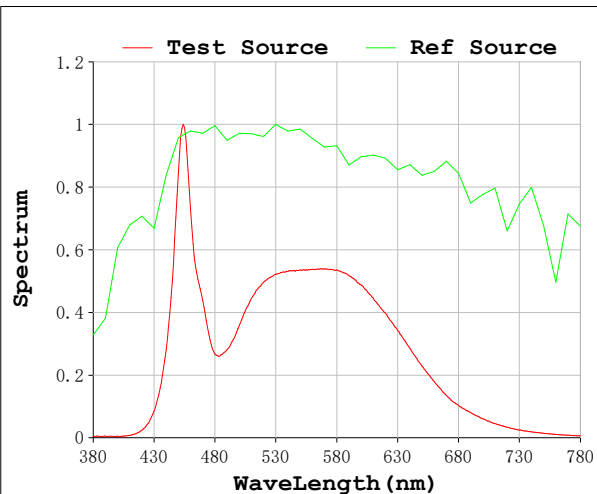
V = 230.09 V I = 0.06895 A P = 13.95 W PF = 0.8791

Status: Integral T = 1000 ms Ip = 53313 (81%)

Model:Ecoled Infinity COB 6000K
 Tester:Sergio Carneros
 Temperature:27Deg
 Manufacturer:Luz Negra S.L

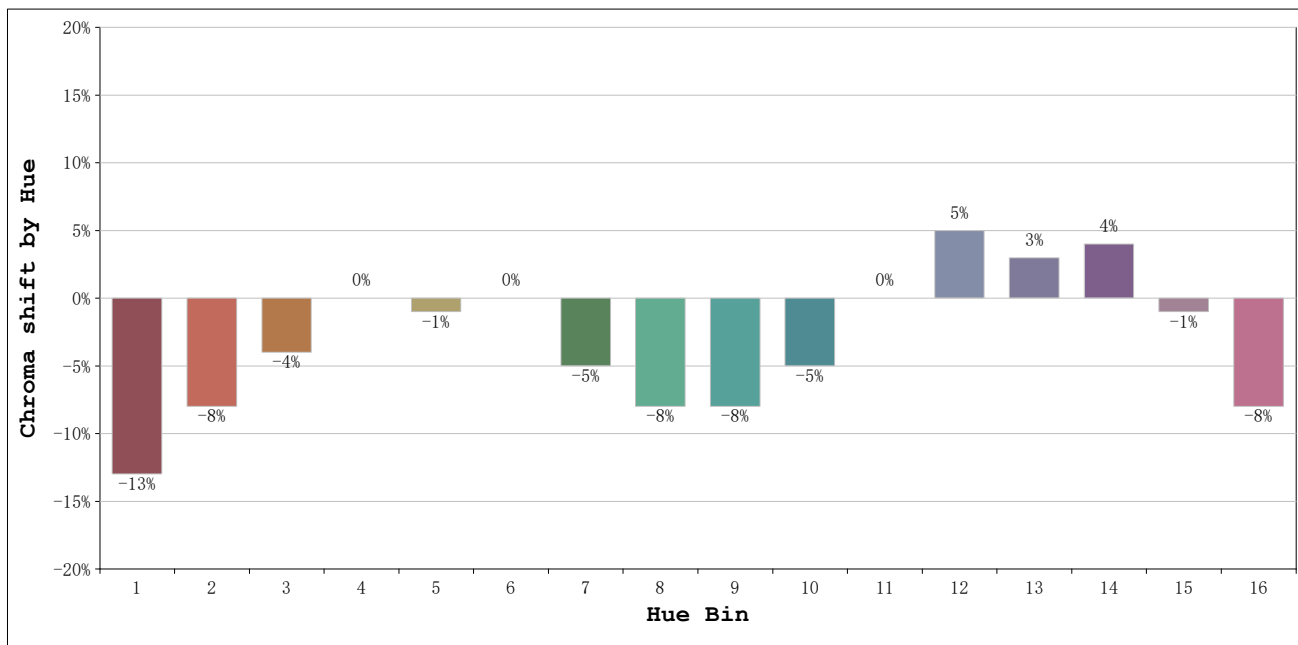
Number: 34.037
 Date:2023-11-15 09:19:47
 Humidity:40%
 Remarks:100cm de tira flexible

Rf: 81 **CCT: 5609 K** **u': 0.1991**
Rg: 92 **Duv: 0.0092** **v': 0.4852**



Model:Ecoled Infinity COB 6000K
 Tester:Sergio Carneros
 Temperature:27Deg
 Manufacturer:Luz Negra S.L

Number: 34.037
 Date:2023-11-15 09:19:47
 Humidity:40%
 Remarks:100cm de tira flexible



			Graphic shift(%)	
Hue Bin	Hue Angle	Rf	Chroma	Hue
1	0.0° - 22.5°	74	-13	0
2	22.5° - 45.0°	80	-8	5
3	45.0° - 67.5°	77	-4	10
4	67.5° - 90.0°	87	0	6
5	90.0° - 112.5°	90	-1	2
6	112.5° - 135.0°	93	0	-2
7	135.0° - 157.5°	87	-5	-3
8	157.5° - 180.0°	84	-8	0
9	180.0° - 202.5°	83	-8	5
10	202.5° - 225.0°	73	-5	14
11	225.0° - 247.5°	76	0	16
12	247.5° - 270.0°	86	5	4
13	270.0° - 292.5°	88	3	-5
14	292.5° - 315.0°	77	4	-14
15	315.0° - 337.5°	73	-1	-16
16	337.5° - 360.0°	72	-8	-9

Model:Ecoled Infinity COB 6000K
 Tester:Sergio Carneros
 Temperature:27Deg
 Manufacturer:Luz Negra S.L

Number: 34.037
 Date:2023-11-15 09:19:47
 Humidity:40%
 Remarks:100cm de tira flexible